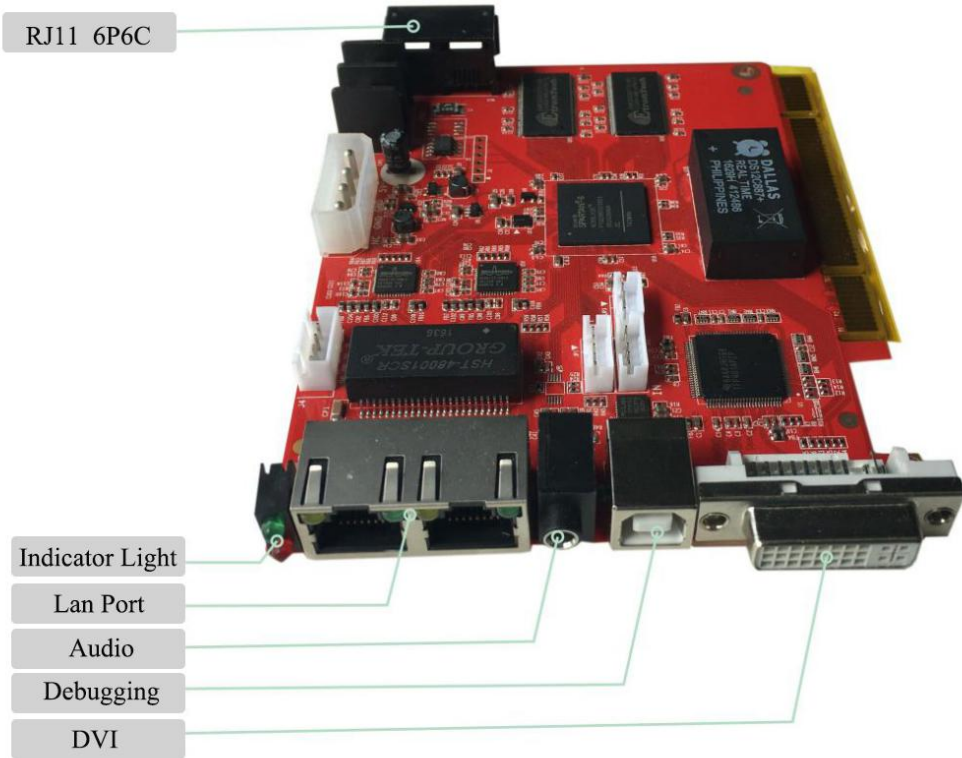


V9 BOX SPECIFICATION

Version	Date	Reason
V7.20	12/04/2017	Document

Hardware



V9

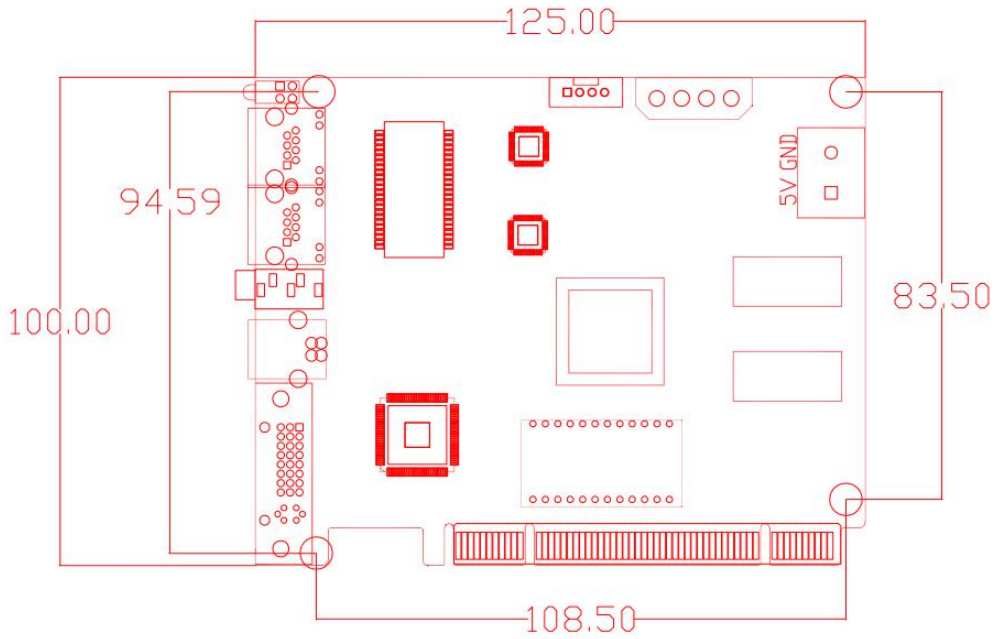


V9BOX

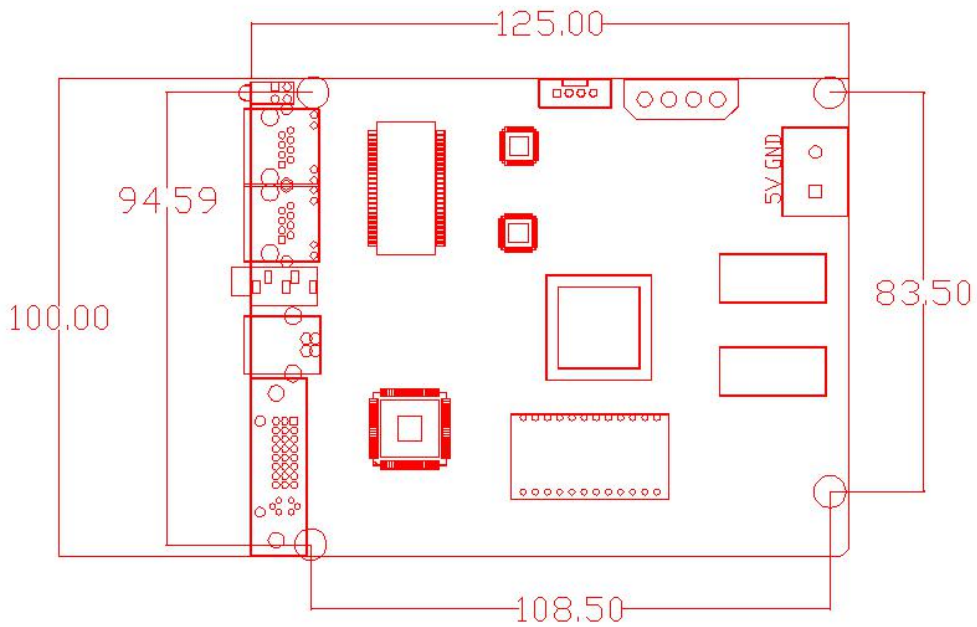
Parameters

Type	Full-color sync control system
Scan	Support Static to 1/32 scan, compatible with mainstream driver IC
Control Range	Double net output ports, user-defined width and height (the highest & widest can be 2048 pixels); output resolution up to 1.3 million pixels under 60HZ ; output resolution up to 2.0 million pixels under 30HZ;
Supply Voltage	5V
Control Mode	USB interface control
Video Interface	DVI
Audio Interface	3.5mm
Output Interface	Double net ports
Cascade Interface	RJ11 (out & in)
Auxiliary Receiving Card	V301 Series
Working Temperature	-40°C - 85°C
Software	LED SyncPlayer

Dimensional Drawing



V9



V9BOX